

# Twelfth Annual Meeting of African Science Academies (AMASA – 12)

## Theme: Poverty Reduction

7 to 8 November 2016

Mastoera Sadan  
Department Planning, Monitoring and Evaluation  
South Africa

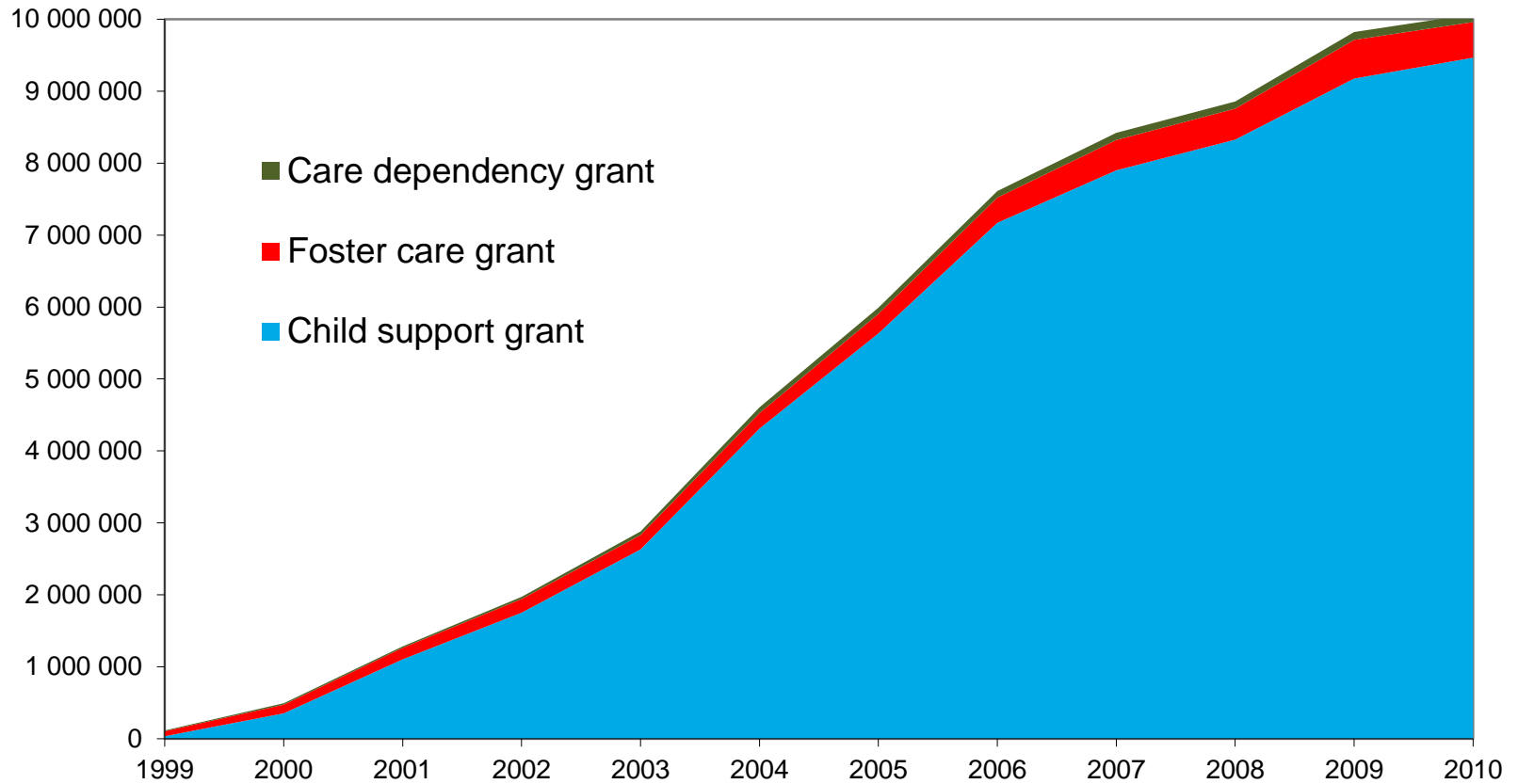


planning, monitoring  
& evaluation

Department:  
Planning, Monitoring and Evaluation  
REPUBLIC OF SOUTH AFRICA

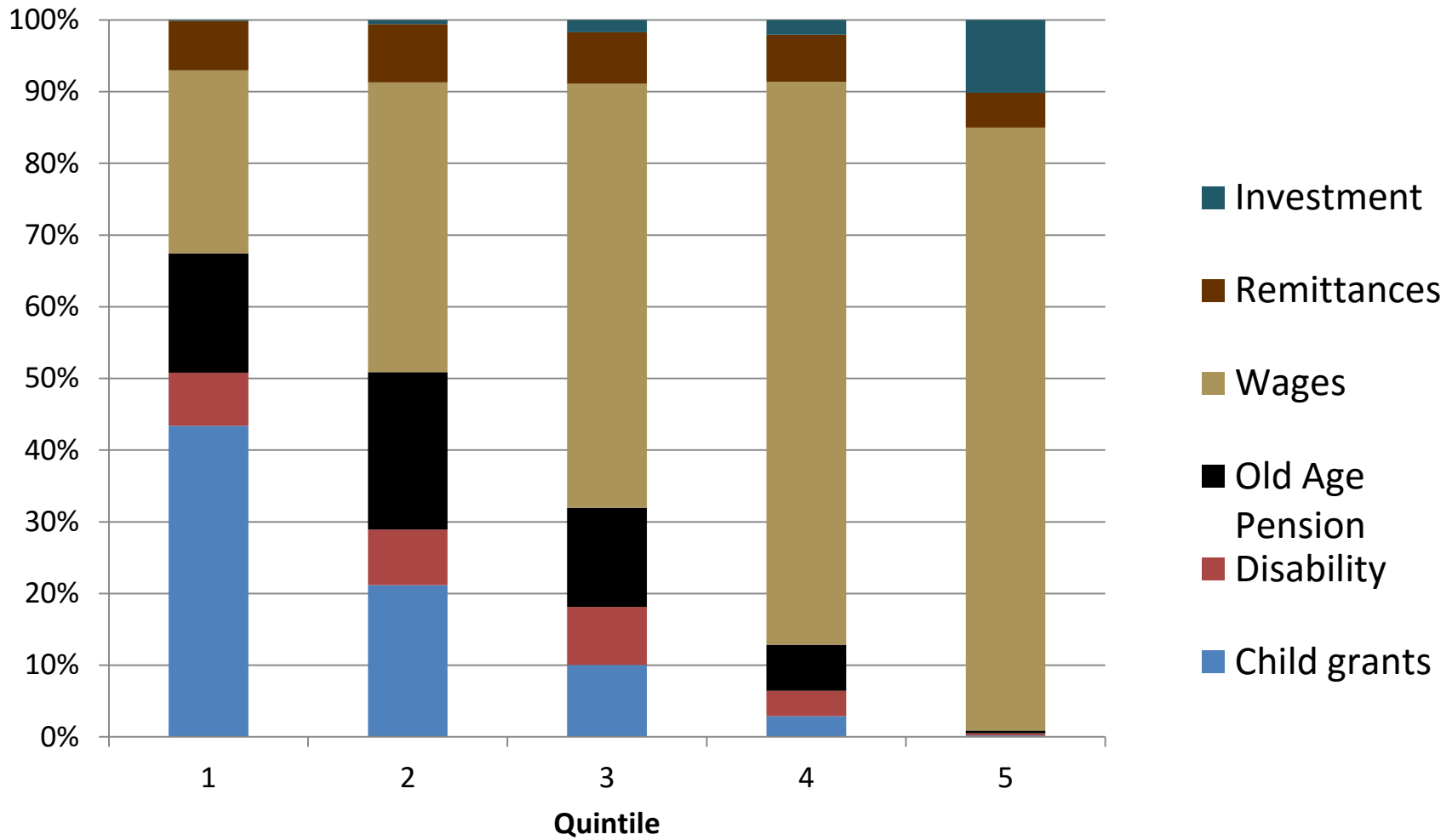


# Expansion of Grants to Children

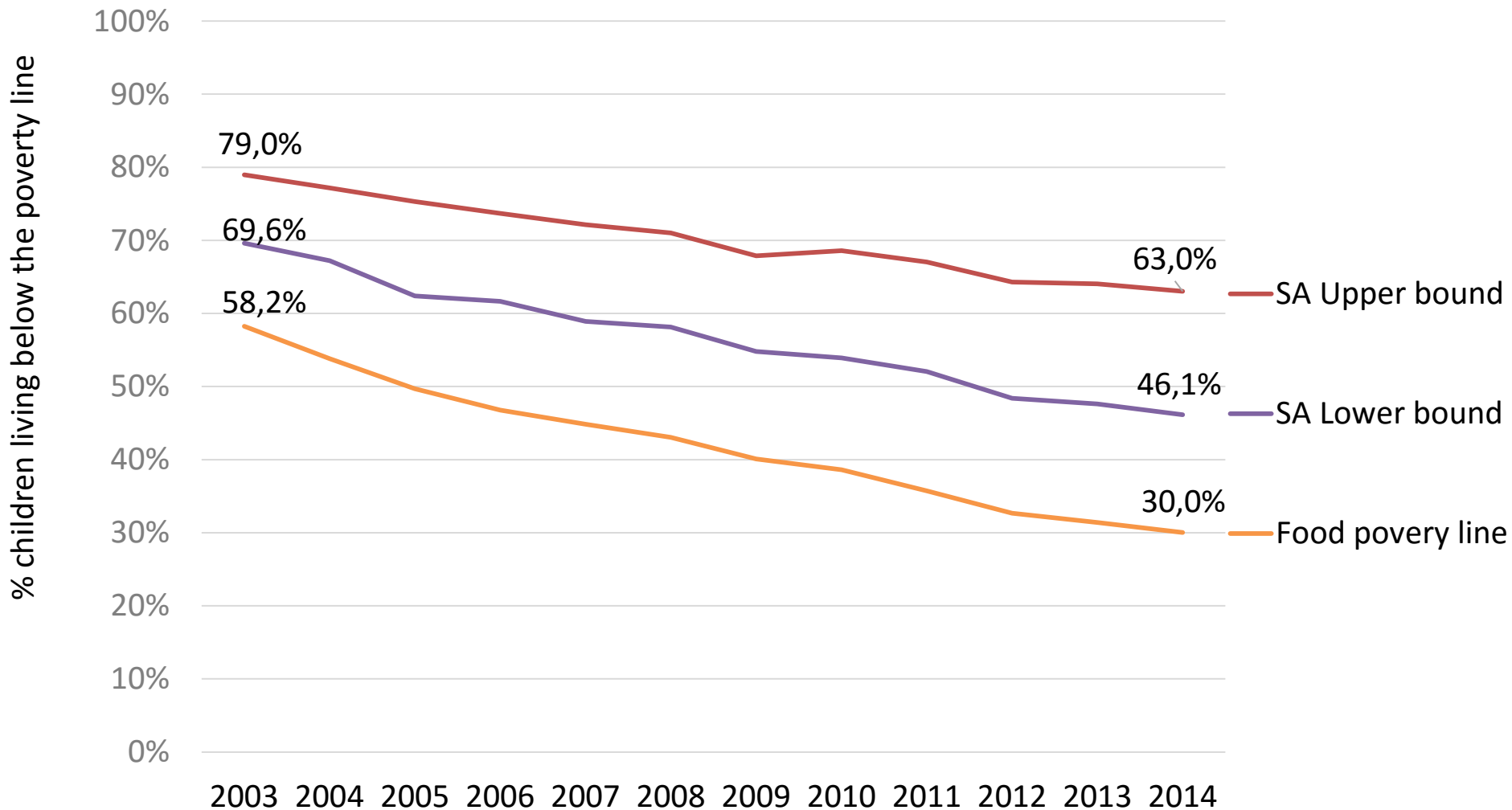


Source: South African Social Security Agency SOCPEN data.

# The grants are pro-poor



# Child poverty headcounts



Source: General Household Survey 2003-2014. (Statistics South Africa).

Calculations by Katharine Hall & Winnie Sambu, Children's Institute, University of Cape Town.

See [www.childrencount.net](http://www.childrencount.net) for more indicators.